

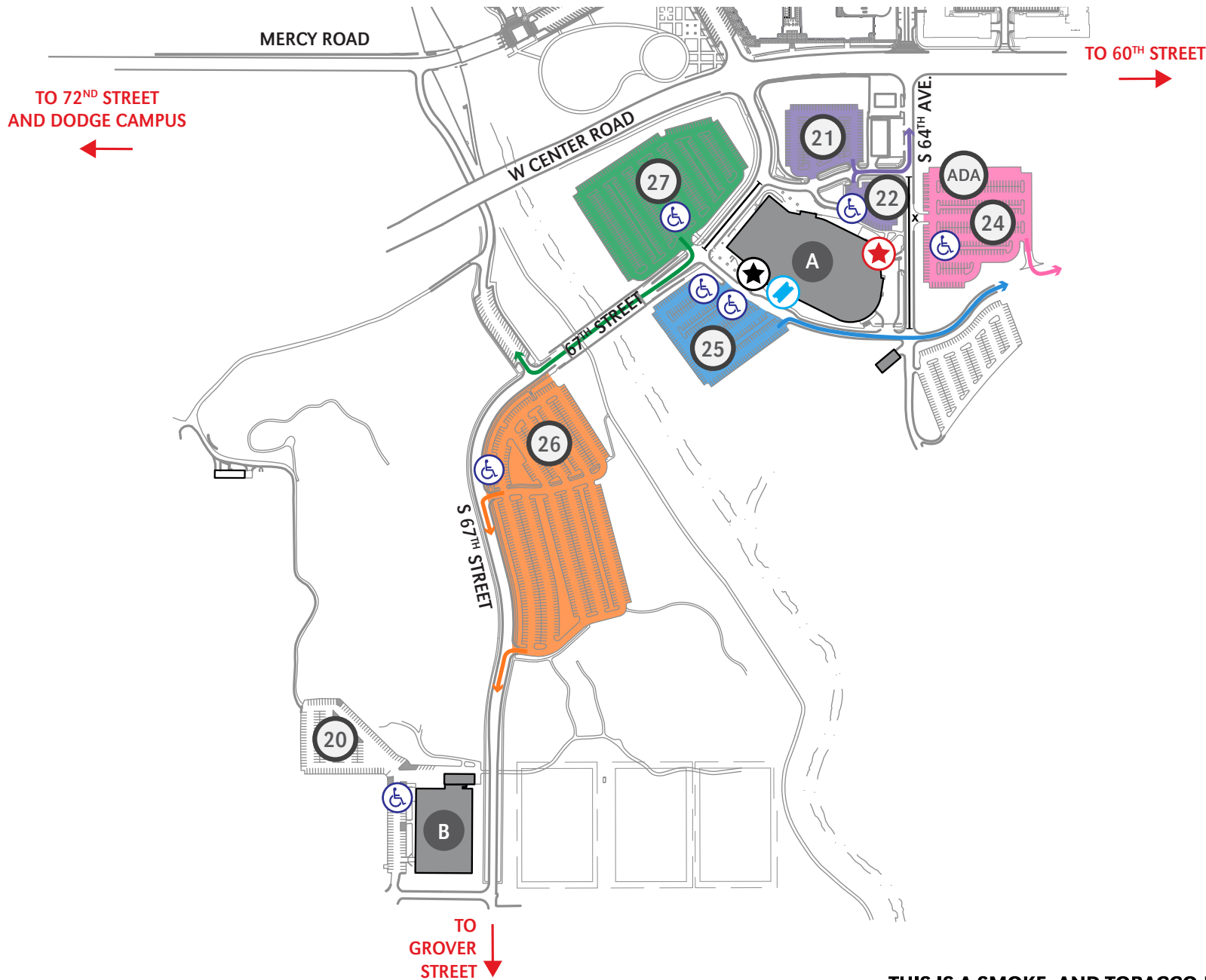


UNIVERSITY OF NEBRASKA AT OMAHA  
**BAXTER ARENA EVENT MAP**

402.554.2800 | unomaha.edu

UPDATED 11-27-18

**OUTBOUND TRAFFIC**



**PARKING KEY**

RESERVED PARKING

NO PERMITS REQUIRED

\* Parking permit types are assigned to specific surface lots, garages, and/or garage levels. It is the responsibility of the permit holder to know which designated areas their permit is valid in.

**MAP KEY**

- Handicap Parking
- Baxter Arena Box Office
- Main Entrance
- North Entrance

**BUILDING KEY**

- A Baxter Arena
- B Center Dome

- 21 Club/Suite Member Parking
- 22 Suite Member Parking
- 24 Club Member Parking
- 25 Arena Visitor Parking
- 26 Visitor Parking
- 27 Arena Visitor Parking

